



SAVANNAH LAKES VILLAGE
REAL ESTATE

Capital™

Home Builders

New Construction Floor Plans

SavannahLakesVillage.com
864-391-5253 | 101 Village Drive, McCormick SC 29835

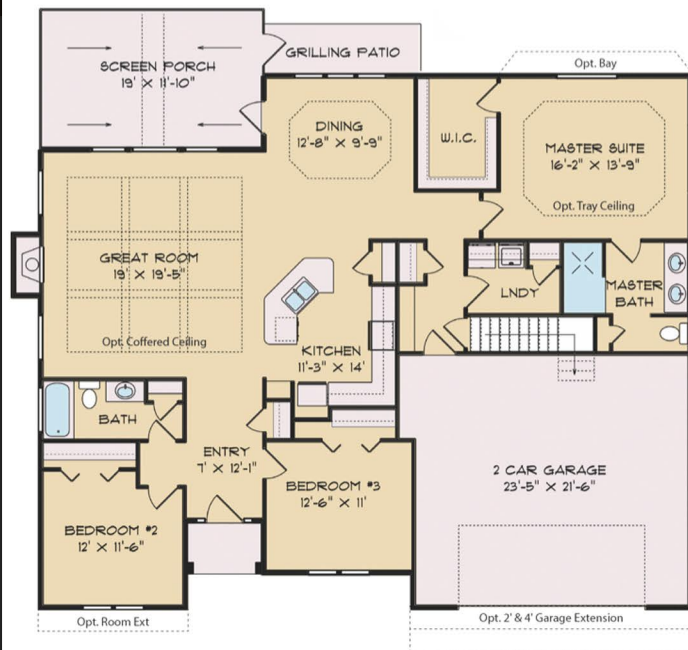


Capital Homes



2,176 HSF

Starting at ~ \$358,000



Room sizes and square footages are approximate, with pricing, floor plans, and elevations subject to change. Pricing is based on slab-on-grade construction, and landscaping is not included. This home features appliances, granite countertops, hardwood and tile flooring, custom kitchen cabinets, fiber cement siding, and stone or brick accents.

3 Beds / 2 Baths / Bonus Room





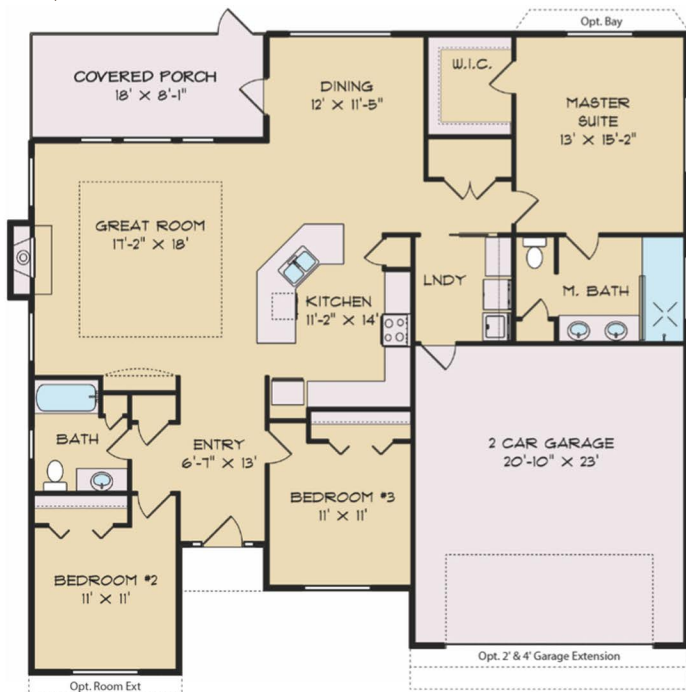
CRAB APPLE

Capital Homes



1,703 HSF

Starting at ~ \$316,000



Room sizes and square footages are approximate, with pricing, floor plans, and elevations subject to change. Pricing is based on slab-on-grade construction, and landscaping is not included. This home features appliances, granite countertops, hardwood and tile flooring, custom kitchen cabinets, fiber cement siding, and stone or brick accents.

3 Beds / 2 Baths





Capital Homes



Starting at ~ \$341,000



1,805 HSF

3 Beds / 2 Baths

Room sizes and square footages are approximate, with pricing, floor plans, and elevations subject to change. Pricing is based on slab-on-grade construction, and landscaping is not included. This home features appliances, granite countertops, hardwood and tile flooring, custom kitchen cabinets, fiber cement siding, and stone or brick accents.



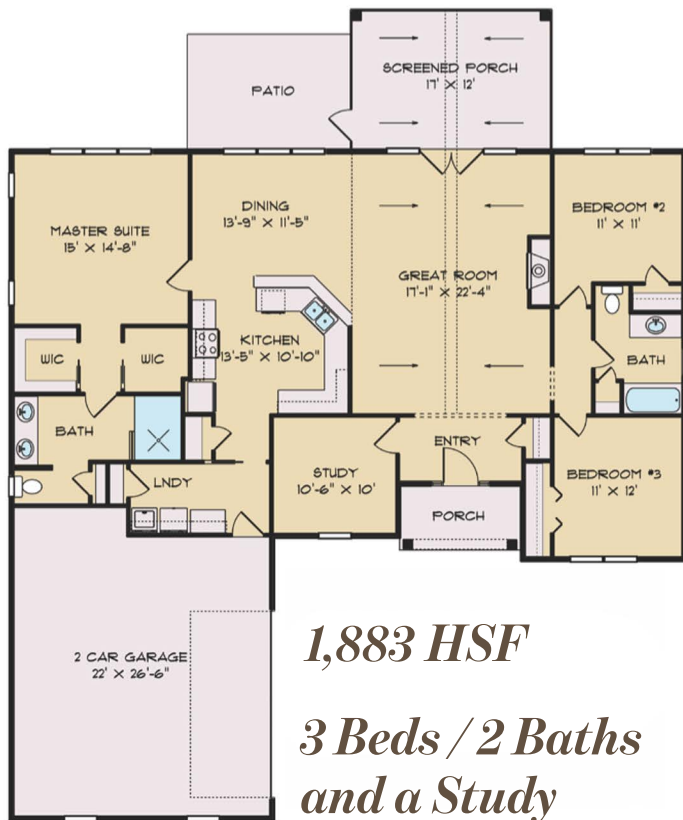


THE NANDINA

Capital Homes



Starting at ~ \$345,000



Room sizes and square footages are approximate, with pricing, floor plans, and elevations subject to change. Pricing is based on slab-on-grade construction, and landscaping is not included. This home features appliances, granite countertops, hardwood and tile flooring, custom kitchen cabinets, fiber cement siding, and stone or brick accents.



1 CHOOSE A FLOOR PLAN

- Tour the model homes and preview the floor plans using the online 3D tours
- Review upgrades and options
- Customize your plan with allowed modifications



2 CHOOSE YOUR LOCATION

- Choose from our select golf or interior lots
- We can also build our plans on a lot you have already purchased



3 CONTRACT SIGNING AND DEPOSIT

- We will sign a contract for you to purchase the selected home on the selected lot with the desired finishes. The contract includes the delivery date.
- The builder deposit is due at this time.



4 FINANCING

- Capital handles the construction financing. Aside from the down payment no other funds will be required until the home is complete.



5 DESIGN MEETING

- This meeting includes time with our interior designer to assist with design selections.
- Conveniently make all selections in the design center.



6 LOT WALK AND TREE REMOVAL PLAN

- Walk the site with the builder to review the home location and tree removal plan.



7 CONSTRUCTION

- Estimated 6-7 month build time from breaking ground.
- Follow along on Capital Home Builder's Facebook page: We will post photos of the project throughout construction with an album dedicated to your home.



8 MOVE IN

- Closing and receive keys
- Have a final walk through and new home orientation
- Welcome Home!



9 FOLLOW-UP SERVICES

- 12 Month new home warranty included

