



SAVANNAH LAKES VILLAGE  
REAL ESTATE

# Capital<sup>TM</sup>

---

## Home Builders

# New Construction Floor Plans

SavannahLakesVillage.com  
864-391-5253 | 101 Village Drive, McCormick SC 29835



# FLOWERING PEACH

*Capital Homes*



*2,176 HSF | 3 Beds / 2 Baths  
and Upstairs Bonus Room*

*Starting at ~ \$364,000*

Room sizes and square footages are approximate, with pricing, floor plans, and elevations subject to change. Pricing is based on slab-on-grade construction, and landscaping is not included. This home features appliances, granite countertops, hardwood and tile flooring, custom kitchen cabinets, fiber cement siding, and stone or brick accents.





SAVANNAH LAKES VILLAGE  
REAL ESTATE

# CRAB APPLE

*Capital Homes*



*1,703 HSF | 3 Beds / 2 Baths*

*Starting at ~ \$322,000*



Room sizes and square footages are approximate, with pricing, floor plans, and elevations subject to change. Pricing is based on slab-on-grade construction, and landscaping is not included. This home features appliances, granite countertops, hardwood and tile flooring, custom kitchen cabinets, fiber cement siding, and stone or brick accents.





SAVANNAH LAKES VILLAGE  
REAL ESTATE

# THE HOLLY

*Capital Homes*



*Starting at ~ \$369,000*



*2,092 HSF  
3 Beds / 2 Baths  
and a Study*

The home is designed with premium finishes, centered on a gourmet kitchen featuring expansive granite countertops and a large central island. Elegant hardwood flooring runs throughout the main living areas including the Foyer, Dining, and Great Room creating a seamless flow. The bathrooms and laundry room are appointed with durable tile flooring, while the Master Suite and secondary bedrooms are finished with plush carpeting for added comfort.





# THE NANDINA

*Capital Homes*

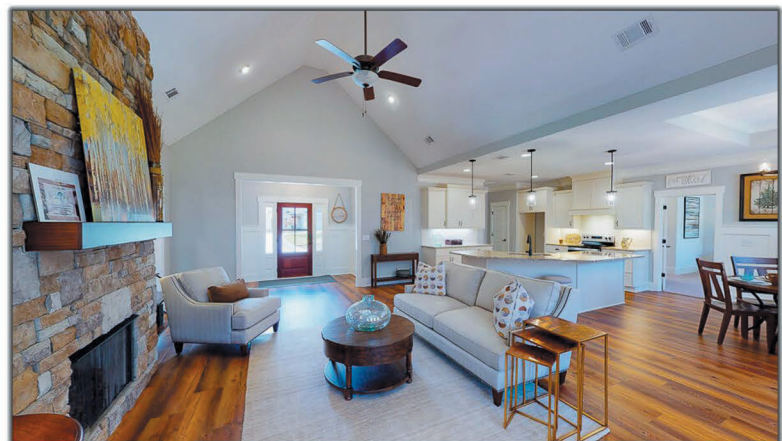


*Starting at ~ \$351,000*



*1,883 HSF  
3 Beds / 2 Baths  
and a Study*

Room sizes and square footages are approximate, with pricing, floor plans, and elevations subject to change. Pricing is based on slab-on-grade construction, and landscaping is not included. This home features appliances, granite countertops, hardwood and tile flooring, custom kitchen cabinets, fiber cement siding, and stone or brick accents.





SAVANNAH LAKES VILLAGE  
REAL ESTATE

# TEA OLIVE

*Capital Homes*



*Starting at - \$346,000*



**1,805 HSF**  
**3 Beds / 2 Baths**

Room sizes and square footages are approximate, with pricing, floor plans, and elevations subject to change. Pricing is based on slab-on-grade construction, and landscaping is not included. This home features appliances, granite countertops, hardwood and tile flooring, custom kitchen cabinets, fiber cement siding, and stone or brick accents.

